

Installation

Preparation

Components



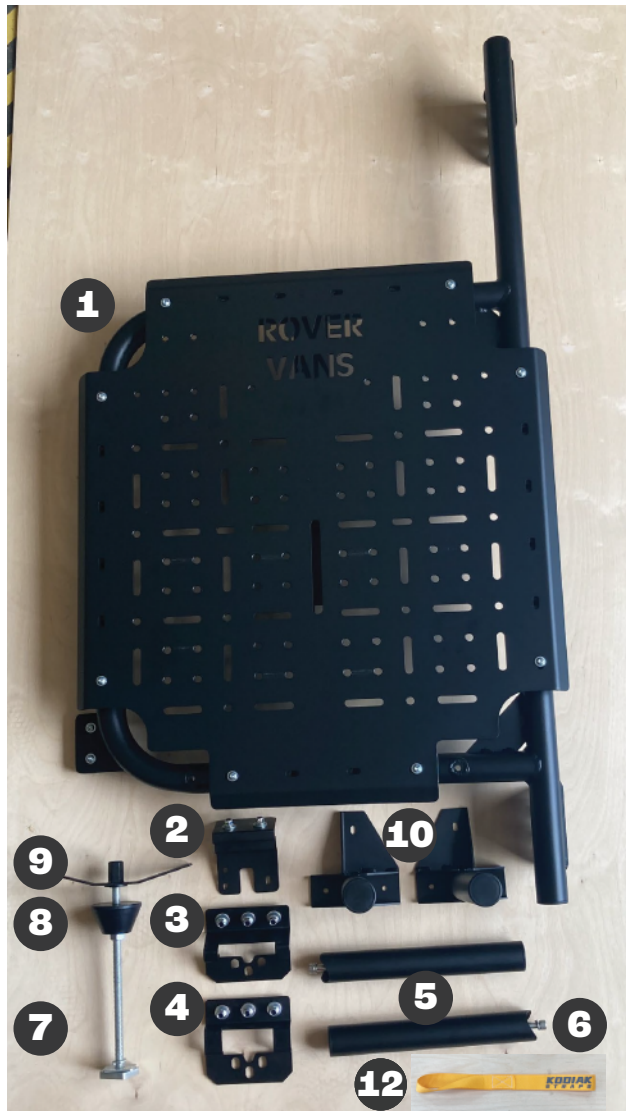
Rover Vans Accessory Rack Installation Instructions

For Ford Transit Rear Door, Passenger's Side

Installation Time:
60 - 90 Minutes

Components

- * Lay out all components on a clean work surface. *
- Check to make sure all pieces that are accounted for and undamaged.



1. Accessory Rack
2. Latch Bracket
3. Upper Hinge Bracket
4. Lower Hinge Bracket
5. Tire Supports
6. Tire Support Bolts
7. Center Wheel Mount Bolt
8. Cone Spacer
9. Winged Handle
10. Accessory Pegs
11. Accessory Peg Bolts
12. Door Handle Strap

Tools Needed

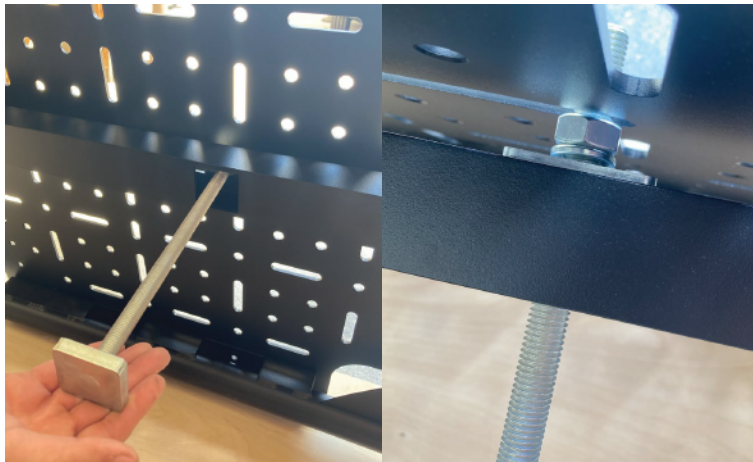
- 13mm Wrench
- Allen Key Set
- T30 Torx Wrench/Socket
- Adjustable Wrench

Preparation

* If you don't want to use the Tire Supports and/or Accessory Pegs,* skip to step 6.

1

Insert the Tire Support Bolt from the back side of the hole located on the bottom of the Accessory Rack. Connect the Tire Support to the Tire Support Bolt, the bolt will thread into the hole of the Tire Support. Repeat this process for the second Tire Support.

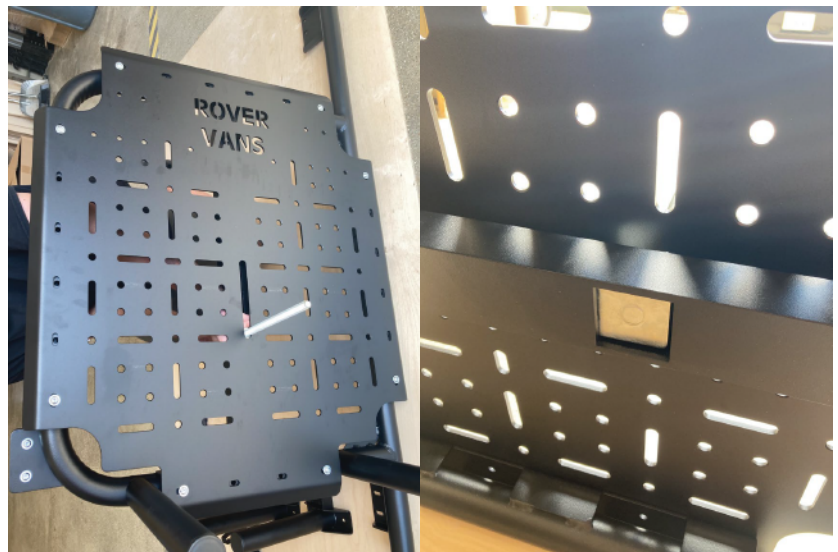


2

Insert the Center Wheel Mount Bolt from the backside of the Accessory Rack through the square hole on the back brace. Before pushing through to the front, add the square washer, lock washer, then the nut between the brace and the panel.

3

Thread the Center Wheel Mount Bolt and nut until the square stopper is fully inserted into the square hole. Adjust the height of the Center Wheel Mount Bolt to match your wheel, then tighten.



Preparation

4

Insert the Center Wheel Mount Bolt through the center of your wheel. Secure the wheel to the Accessory Rack using the Cone Spacer and the winged handle.

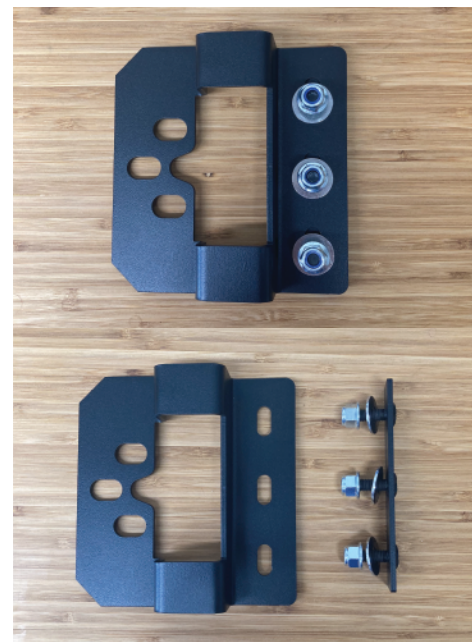


5

Insert the Accessory Peg Bolts through the holes on the Accessory Pegs and through the front panel using a washer. The Accessory Pegs can be installed in many places across the front panel, so pick a position that works best for you!

6

Obtain the Upper, Lower, and Latch Brackets. Unscrew the nuts from the bolt plate to separate these pieces from the Upper and Lower Hinge Brackets. Next, unscrew the nuts from the Latch Bracket, but leave the bolt plate attached.



Installation



7

Feed the Door Handle Strap behind the door handle before feeding through the loop of the strap. Once the rest of the Accessory Rack is installed, the strap can be fed through the face of the rack for easy access to the door handle.

8

Remove the T30 Torx bolts from the rear door latch. You can use the plastic piece to the left of the latch to hold the latch assembly in place.



9

Use the T30 Torx bolts to attach the Latch Bracket to the door. Be sure the plate with welded bolts is fed through the Latch Bracket before installing the Latch Bracket. It cannot be installed after the Latch Bracket is bolted into place. Using the plastic piece to support the latch assembly is very helpful in this step.

Installation

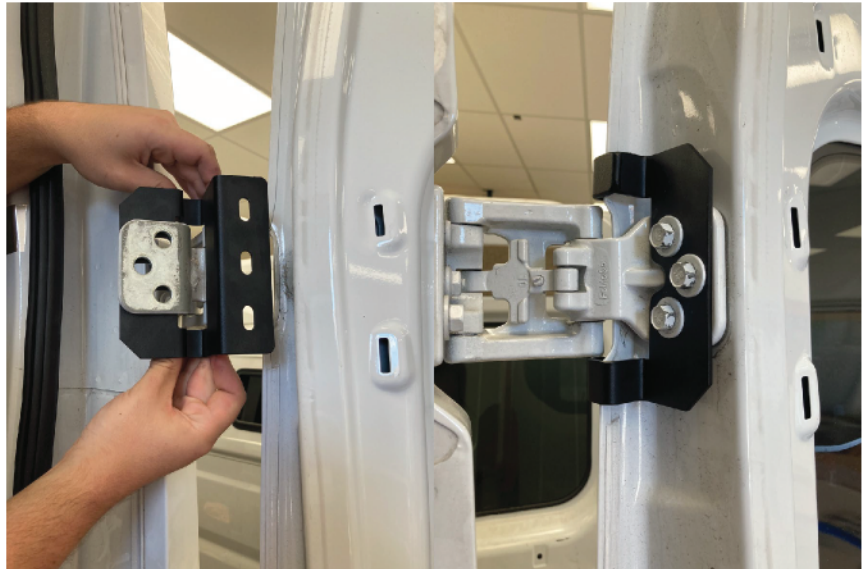


10 Attaching hinges to door

Have a friend hold up the door while you unbolt the upper hinge from the door.

11

Insert the Upper Hinge Bracket through the door hinge before using the bolts that were removed in step 10 to secure the bracket to the hinge. Ensure the bracket is not touching the outside face of the door, then tighten the bolts. Repeat steps 10 and 11 to install the Lower Hinge Bracket.



12 Attaching Rack to brackets

Have a friend hold up the Accessory Rack while you insert the plate with welded bolts through the Accessory Rack and Upper Hinge Bracket. Use the nuts to slightly tighten the bracket into place. Repeat this step to secure the Accessory Rack to the Lower Hinge Bracket and lastly the Latch Bracket.

Installation

13

Fully tighten all nuts from the Upper, Lower, and Latch Brackets. Starting with the Upper, next Lower, then finally the Latch Bracket.



Now you are ready for adventures with your new Accessory Rack!